

MONTHLY MEMBERSHIP PROGRESS REPORT

LOCATION BULGARIA

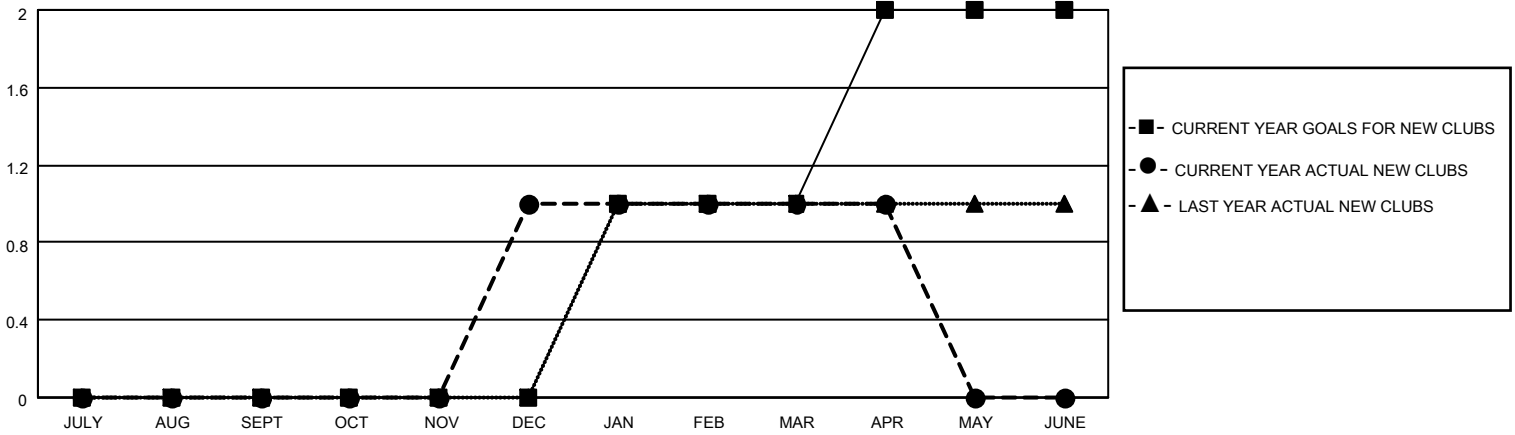
District 130

Results as of: 4/30/2023

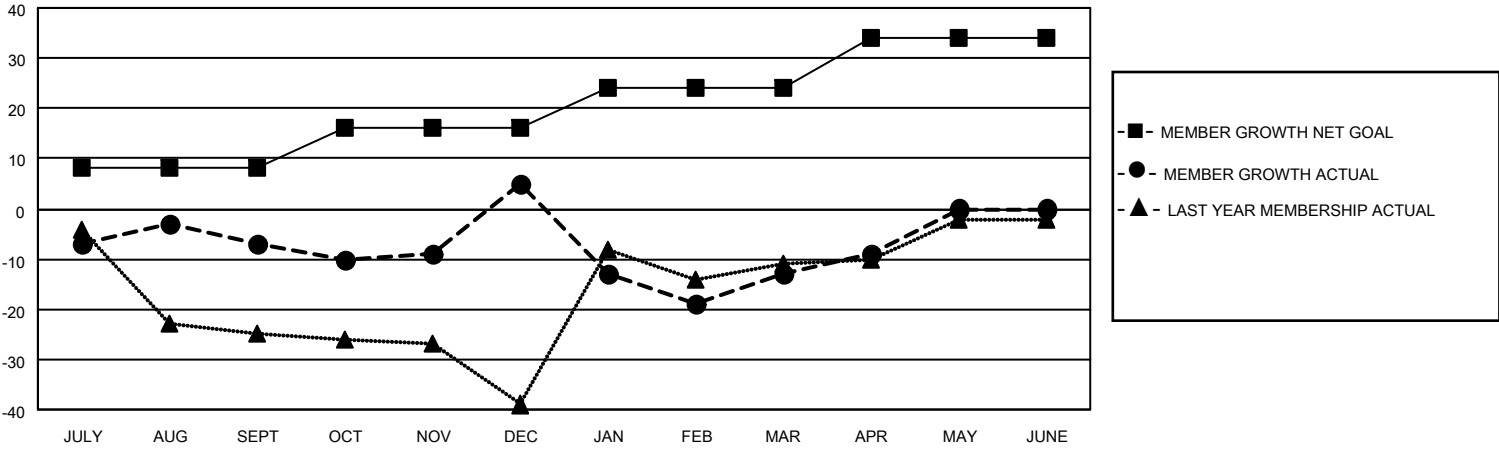
Clubs			
RESULTS FOR 2022-2023			
QUARTER	NEW CLUB GOAL	NEW CLUBS	DROPPED CLUBS
JULY/AUG/SEPT	0	0	0
OCT/NOV/DEC	0	1	0
JAN/FEB/MAR	1	0	0
APR/MAY/JUNE	1	0	0

Members			
RESULTS FOR 2022-2023			
QUARTER	MEMBER GROWTH NET GOAL	MEMBER GROWTH ACTUAL	DROPPED MEMBERS ACTUAL (including transfers)
JULY/AUG/SEPT	8	8	14
OCT/NOV/DEC	8	27	15
JAN/FEB/MAR	8	27	31
APR/MAY/JUNE	10	11	7

GOALS AND ACTUAL NEW CLUBS CUMULATIVE



GOALS AND ACTUAL MEMBERS CUMULATIVE



DROPPED CLUBS: 0	
DROPPED MEMBERS	
DECEASED	2
CLUB CANCELLED	13
OTHER	52
TOTAL	67

15 CLUBS OF 33 ADDED 1 OR MORE NEW MEMBERS

[CLICK HERE FOR CUMULATIVE MEMBERSHIP DATA](#)

<u>GENDER DISTRIBUTION</u>	
MALE	291 (45.90%)
FEMALE	342 (53.94%)
NON BINARY	0 (0.00%)
PREFER NOT TO ANSWER	1 (0.16%)
TOTAL FAMILY UNIT MEMBERS	
	67
FAMILY MEMBERS PAYING HALF DUES	
	35